



PCET's
Pimpri
Chinchwad
University, Pune

Learn | Grow | Achieve



PIMPRI CHINCHWAD EDUCATION TRUST
A Trusted Brand in Education Since 1990..

SCHOOL OF SCIENCES



B.Sc.

- Nutrition & Dietetics
- Clinical Psychology

www.PCU.edu.in



PIMPRI CHINCHWAD EDUCATION TRUST
A Trusted Brand in Education Since 1990..

About Pimpri Chinchwad Education Trust (PCET), Pune



PCET Campus, Akurdi, Pune

Pimpri Chinchwad Education Trust (PCET) has a legacy of nurturing excellence since its establishment in 1990. Its sole mission was aimed at serving society, the industry, and all stakeholders through value-inculcating, quality education in the area of schooling, as well as professional tutelage in the fields of engineering, IT, management, design, health sciences, liberal arts, and computer applications. Our 12 institutes spread across our 3 campuses in Nigdi, Ravet, and Sate, Vadgaon Maval, Pune, respectively have carved out a name for themselves, having transformed the lives of over 47000 students so far. Our institutes: Pimpri Chinchwad College of Engineering (PCCOE), Pimpri Chinchwad College of Engineering & Research (PCCOER), and S.B. Patil College of Architecture & Design are some of the most sought-after colleges in the country.

About Pimpri Chinchwad University, Pune

Pimpri Chinchwad Education Trust (PCET) is the driving force behind Pimpri Chinchwad University, Pune. As a trusted and renowned educational institution, PCET has a rich history of providing quality education across various disciplines. With a strong commitment to academic excellence, research, and industry-relevant programs, PCET has become a beacon of learning in the Pune region. Pimpri Chinchwad University, Pune, is a dynamic and forward-thinking university committed to delivering high-quality education and fostering innovation. Located in the thriving city of Pimpri Chinchwad Pune belt, it is strategically positioned within an industrial belt that includes IT hubs, automobile industries, and diverse manufacturing sectors. The university offers a diverse range of programs, from engineering and technology to management, design, liberal arts, mass media, law, pharmacy, health sciences, and more, ensuring students have a plethora of options to explore.



PCU Campus, Sate, Vadgaon - Maval, Pune

Institutes Under

Pimpri Chinchwad Education Trust (PCET Pune)

- Pimpri Chinchwad Polytechnic (www.PCPolytechnic.com)
- Pimpri Chinchwad College of Engineering (www.PCCOEpune.com)
- Pune Business School (www.PuneBusinessSchool.com)
- S. B. Patil Public School (www.SBPatilSchool.com)
- S. B. Patil College of Science & Commerce (www.SBPatilCollege.com)
- Pimpri Chinchwad College of Arts, Commerce and Science (www.PCACSpune.com)
- S. B. Patil Institute of Management (www.SBPatilIMBA.com)
- Pimpri Chinchwad College of Engineering & Research (www.PCCOER.com)
- S. B. Patil College of Architecture & Design (www.SBPatilArchitecture.com)

Institutes Under Management Support By Pimpri Chinchwad Trust (PCET)

- Nutan Maharashtra Institute of Engineering & Technology (www.NMIET.edu.in)

Other Programs At Pimpri Chinchwad University

- | | | | | |
|----------|---------|------------|---------|----------|
| ◆ B.Tech | ◆ MCA | ◆ MBA++ | ◆ LL.B. | ◆ B.Sc. |
| ◆ M.Tech | ◆ M.Des | ◆ MBA | ◆ LL.M. | ◆ BA |
| ◆ BCA | ◆ B.Des | ◆ BA.LL.B. | ◆ BBA | ◆ Pharma |

B.Sc.

Clinical Psychology

Duration 3/4 Years **Fee Per Annum** ₹ 1,10,000/-

Courses Offered

Eligibility : Open Category student should have scored minimum 45 % of score at 10+2 Science or Humanities with Psychology as Subject from ICSE/ CBSE/Any State Board Examination or equivalent qualification from any recognized board and 40% for reserved category candidate. Candidates are selected on the basis of merit AND Personal interview conducted by PCU

Course Overview :

This program delves into the study of human behaviour, mental processes, and the application of psychological principles to real-world issues. Students will gain insights into assessment, diagnosis, and therapeutic techniques.

Career Opportunities :

Graduates can pursue careers as clinical psychologists, counsellors, mental health professionals, or continue their education with advanced degrees.

USPs :

- ◆ **Experiential Learning :** Hands-on training through internships and clinical practice to develop practical skills.
- ◆ **International Placement:** Opportunities for placements in renowned healthcare organizations worldwide.
- ◆ **Expert Faculty :** Learn from industry leaders and experienced professionals in the field of psychology.
- ◆ **Research Opportunities :** Engage in cutting-edge research projects that contribute to the advancement of clinical psychology.

B.Sc.

Nutrition & Dietetics

Duration 3/4 Years **Fee Per Annum** ₹ 1,10,000/-

Eligibility : Open Category student should have scored minimum 45 % of score at 10+2 Science from ICSE/ CBSE/Any State Board Examination or equivalent qualification from any recognized board and 40% for reserved category candidate. OR Must have passed the Higher Secondary School Certificate (Std.XII) examination with the Minimum Competency based vocational courses (MCVC) conducted by the different Divisional Boards of the Maharashtra State Board of Secondary and Higher Secondary Education- Open Category student should have scored minimum 45 % of score & 40% for reserved category candidate
Candidates are selected on the basis of merit AND Personal interview conducted by PCU

Course Overview :

This program emphasizes the science of nutrition and its role in health and wellness. Students will learn about dietary planning, food safety, and the impact of nutrition on health.

Career Opportunities :

Graduates can work as nutritionists, dietitians, health consultants, or advance to further studies in related fields.

USPs :

- Experiential Learning :** Practical experience through internships in clinical settings and community outreach programs.
- International Placement :** Opportunities to work with global organizations focused on nutrition and health.
- Personalized Learning :** Customized educational pathways to meet individual career goals and interests.
- Holistic Approach :** Education that integrates the latest research in nutrition with practical application.

Advantages of PCU

 Industry Relevant and NEP-compliant curriculum.	 Contemporary Majors Designed by Global Experts.	 Dedicated Faculty with adequate industry experience.	 International & National Certifications.
 Ability Enhancement through Foreign Language Courses.	 Research & innovation environment.	 Project-based Experiential Learning.	 Placement preparation efforts.

Why Choose Us?

◆ A Fresh Approach to Learning:

At Pimpri Chinchwad University, we offer an engaging and dynamic learning environment that encourages exploration, creativity, and the development of real-world skills to meet the ever-evolving healthcare landscape.

◆ Global Opportunities:

With international placements and global partnerships, our students are exposed to healthcare practices worldwide, enhancing their experience and broadening their career prospects.

◆ Practical, Hands-On Learning:

Through partnerships with leading healthcare organizations, we provide real-world experiences that equip students with the knowledge and skills needed to tackle actual healthcare challenges.

◆ Accredited, Cutting-Edge Programs:

Our courses are not only globally recognized but also keep pace with the latest advancements in healthcare, ensuring our graduates are always ahead of the curve.

◆ Support Beyond the Classroom:

We focus on your overall development, helping you build essential skills like leadership, communication, and teamwork, so you're ready to make a positive impact in healthcare.

Real-World Learning: Gain practical experience through internships, lab work, and clinical placements that prepare you for success in your career.

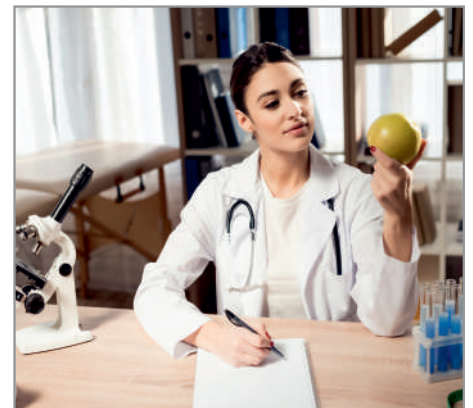
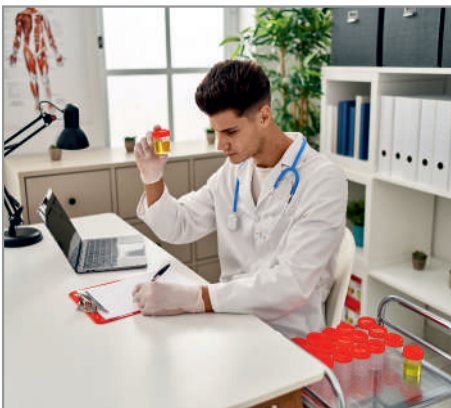
Global Exposure: Take part in international placements and collaborations that provide a broader perspective on healthcare practices and open doors to global career opportunities.

Learn from the Best: Our expert faculty, made up of experienced professionals and industry leaders, ensures you're learning from the most knowledgeable people in the field.

Top-Notch Facilities: Our state-of-the-art labs, clinics, and healthcare technologies provide an immersive learning experience that's second to none.

Guided Career Growth: We offer personalized career counselling and placement assistance to help you transition smoothly from education to a successful healthcare career.

Course Highlights



PCET's International Collaborations

Bilateral Agreements (34+ MoUs) with International Universities.

(USA, UK, Australia, Russia, Germany, Japan, Malaysia, Indonesia, Vietnam, Myanmar and Ireland)

PCET's international collaborations stand as a testament to its commitment to global education and academic excellence. With partnerships involving over 34 prestigious international universities and organizations, PCET fosters academic and research exchange, facilitates expertise sharing for course design, and jointly conducts workshops, conferences, webinars, and symposiums. These collaborations also offer valuable opportunities for students across all PCET institutes, including Pimpri Chinchwad University (PCU).



PCET Centralised Placement Cell

The PCET Centralized Placement Cell is a pioneering initiative that serves as the cornerstone of placement activities across all institutes under the Pimpri Chinchwad Education Trust (PCET). With a strong legacy of academic excellence and industry collaboration, this centralized cell ensures that all students within the PCET ecosystem have access to high-quality placement opportunities.

Highest Salary Offered to our Student

CTC 61 Lakhs p.a

**PCET TOTAL OFFERS 2022 BATCH:
2,147 JOB OFFERS FOR 1,662 STUDENTS**

Stellar Placements for PCET Students

Capgemini (2022-2023) 547

Capgemini (2021-2022) 348

Capgemini (2020-2021) 323

Cognizant (2021-2022) 307

Wipro (2021-2022) 267

Cognizant (2022-2023) 229

Capgemini (2019-2020) 207

KPIT (2015-2016) 183

KPIT (2014-2015) 155

Accenture (2022-2023) 149

Company	Salary (LACS PER YEAR)	Company	Salary (LACS PER YEAR)
UBER	61 L	AFour Technologies	8.0 L
Data Insights	36 L	Samsung R&D	7.5 L
ZF India	32 L	Capgemini	7.5 L
Amazon	28L	Dassault	7.5 L
Directi	26 L	Josh Software	7.0 L
Konica (Japan)	20 L	Bombardier	7.0 L
Daifuku Co Ltd (Japan)	18 L	TIAA	7.0 L
Techfirm (Japan)	17 L	Accenture	6.5 L
Veritas	12.5 L	Informatica	6.0 L
HSBC	12 L	Mediaocean	6.0 L
TEO Technologic	11.6 L	TetraPak	6.0 L
Adobe	11 L	ThoughtWorks	5.8 L
Flipkart	11 L	Tibco	5.5 L
Credit Suisse	11L	Cummins	5.5 L
Vmware	10 L	Godrej & Boyce	5.5 L
LTI	10 L	Value Labs	5.3 L
Quantiphi	9.5 L	KSB Pumps	4.75 L
Symantec	9.0 L	Sagitec	4.5 L
Persistent Systems	8.4 L	Uno Minda	4.5 L
SAP Lab	8.25 L	SKF	4.5 L
Pubmatic	8.0 L	Sungard	4.5 L

Industry Connects

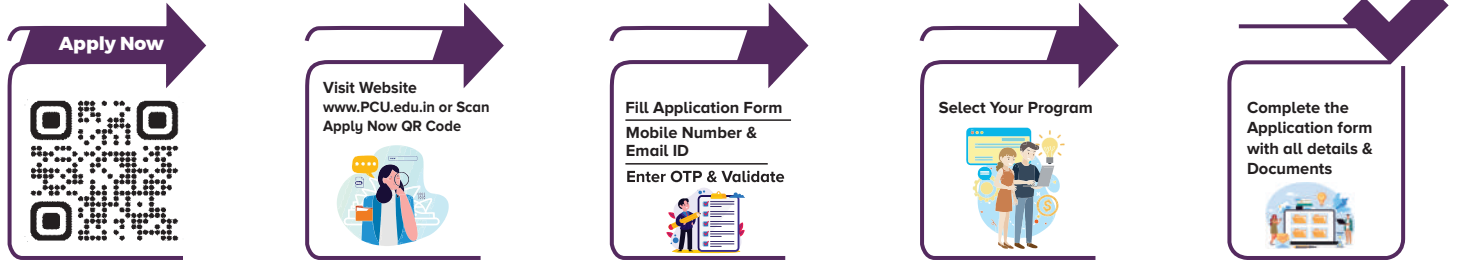
Our strategic location amidst the industrial hubs of Pune, Pimpri Chinchwad, Talegaon, Chakan, Navi Mumbai, and Mumbai provides students with unparalleled opportunities for internships, industrial visits, and collaborations with leading companies. Our strong network of PCET alumni, many of whom are leaders in their respective industries, frequently engage with the students, sharing valuable insights and paving the way for their success.



Highlights at Pimpri Chinchwad Education Trust, Pune

34+ Years Legacy In Quality Education	1,000+ Recruiters On Campus Every Year	32,100+ Placements	57,500+ Alumni	5,500 Research Papers
1,200+ Faculty	20,000+ Students on Campus Every Year	4 Campuses	11 Educational Institutes	550+ Patents

Apply in easy step's



A Flourishing Student Life at PCU

Life at PCU is not just about academics it's also about personal growth, cultural exposure, and extracurricular activities. Our campus is buzzing with societies and events that cater to diverse interests, ensuring that students have a well-rounded experience.



Shape your future at PCU with International-National certifications & Experiential Learning in Academics In collaboration with



Spoken Tutorial
Software Training Project
Developed by IIT Bombay



EduSkills
Nation Building Through Skills



NSE
Academy



Red Hat Academy
World's largest Linux Company

coursera

NPTEL

Google
CERTIFICATIONS

INTERNSHALA

PCU HOSTEL

We are delighted to introduce our exceptional Pimpri Chinchwad University, Pune hostel facility, nestled amidst the breathtaking beauty of lush green nature and majestic mountains. Designed to provide students with a truly enriching living experience, our hostel offers a range of outstanding features.

Key Features We Offer

- Modern and Well-Equipped Rooms
- Wi-Fi Connectivity
- Secure and Safe Environment
- Indoor Games
- Gymnasium
- Lush Green Nature
- Study Areas with Scenic Views
- Supportive Staff and Services



Leading the Way in Education : Maharashtra's Finest University

AWARDS & RANKINGS



Best Emerging University of the year 2023



Best Organization in Academics, Placements & Research



Awarded as the "Pride of Maharashtra"



Awarded as the "Best Private University in Maharashtra".



Ranked 5 among the best emerging state-private universities.



EduSkills Emerging University & Academic Credit for Internship Award 2024



Times Education Icons 2024



Bharat Leadership Award



PCET's
Pimpri Chinchwad University, Pune

Learn | Grow | Achieve

PCET's Pimpri Chinchwad University (PCU)

(Established under Govt. of Maharashtra Act No. V 2023)

Sate Maval (PMRDA), Pune- 412106, MH, India

☎ : +91 9046 9090 03 ☎ : +91 90288 85422

✉ : admissions@pcu.edu.in 🌐 : www.PCU.edu.in

Scan To Know More

